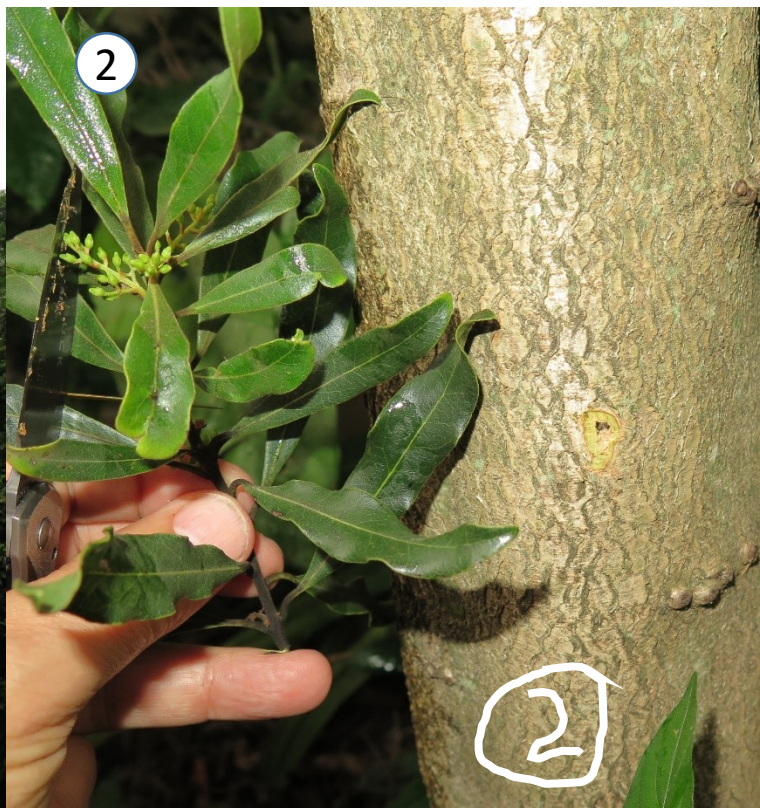


1



1. Picture of tree showing dying parts.

2



2. Picture to identify tree including tree number, leaves, flowers/seeds, stem/bark.

3



3. Zoom in on affected area.

4



4. Zoom in on holes, scrape bark off one hole to show tunnel.



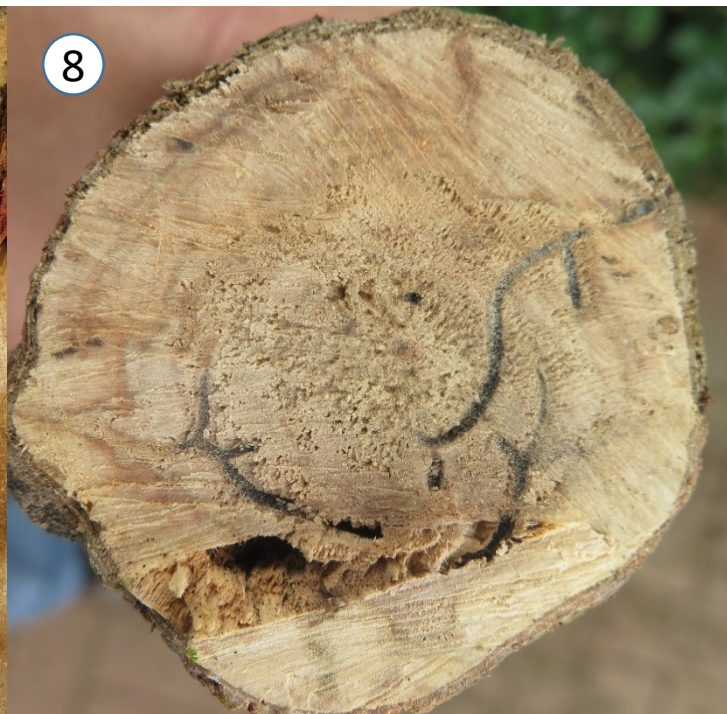
5. Use a knife or chisel to cut a square of bark around the entrance hole.



6. Carefully peel the bark to expose the tunnels penetrating the sapwood and the fungal stain surrounding it.



7. Photograph any pieces of wood with parts of galleries exposed to show the fungal stain.



8. If possible or available, photograph a cross section of the trees showing the structure of the beetle tunnels.