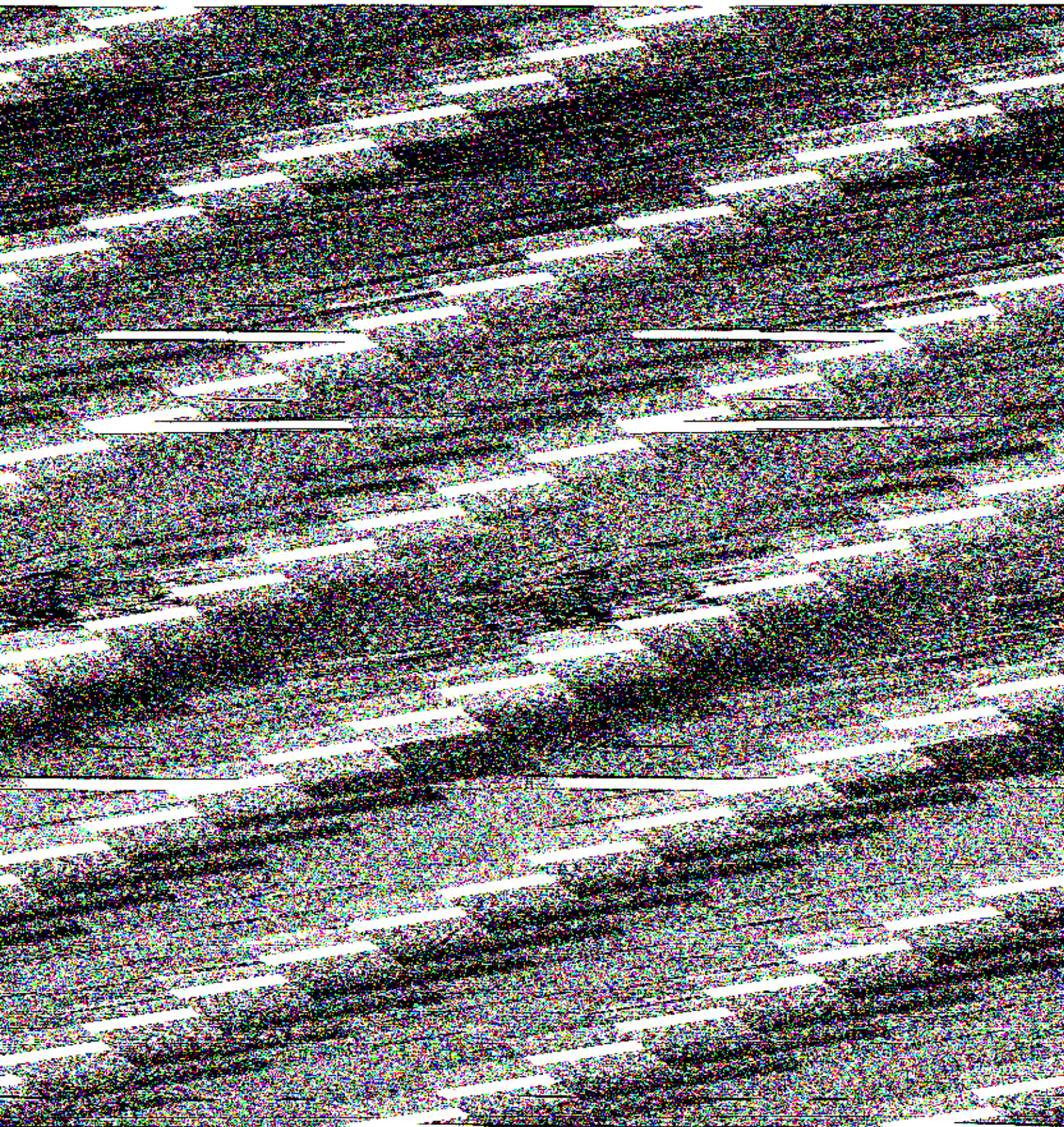


Figs 1-4. *Protosiphon burchellii* on *Philotheca* in the field. Fig. 1, approximately two-thirds of inflorescence; Fig. 2, magnified view of leaf base; Fig. 3, apex of perithecial; Fig. 4, magnified view of perithecial apex showing asci and spores. Bar = 50 µm.

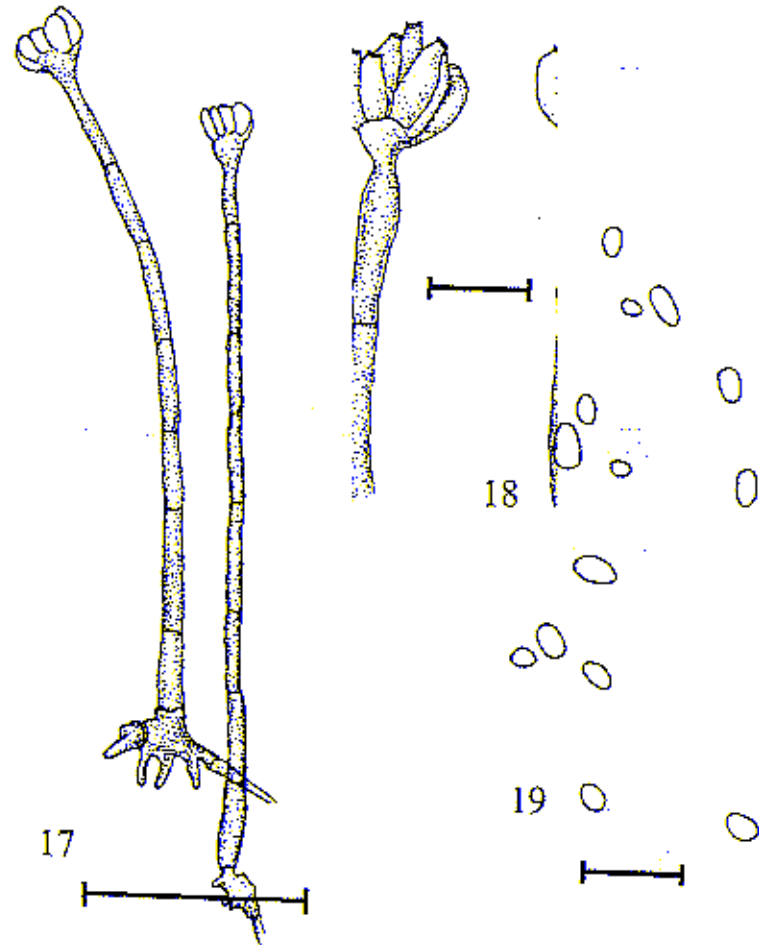
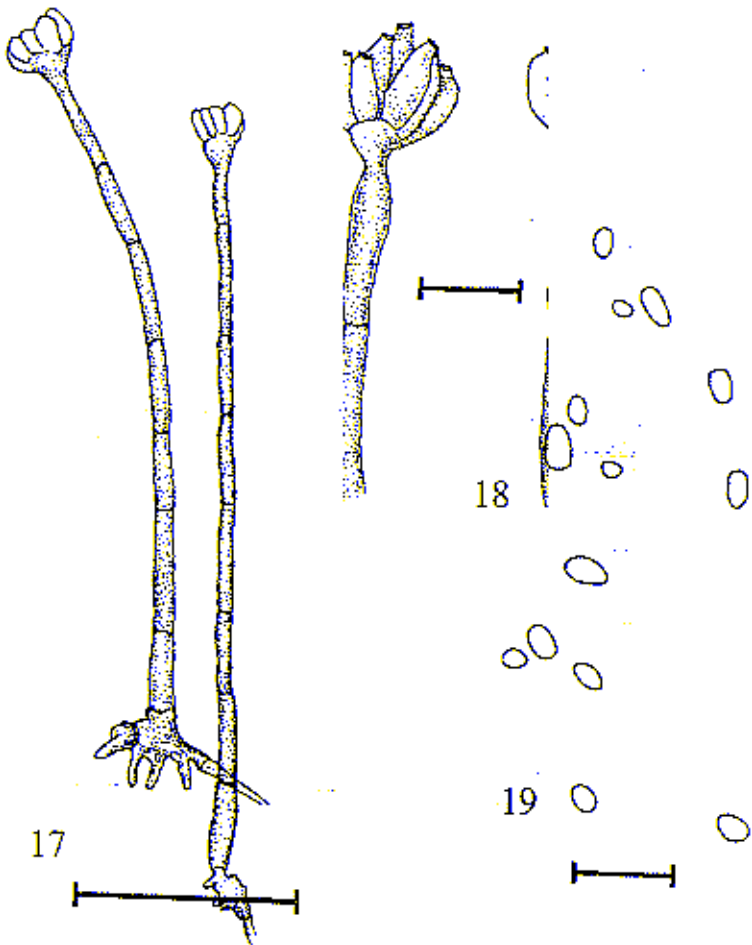
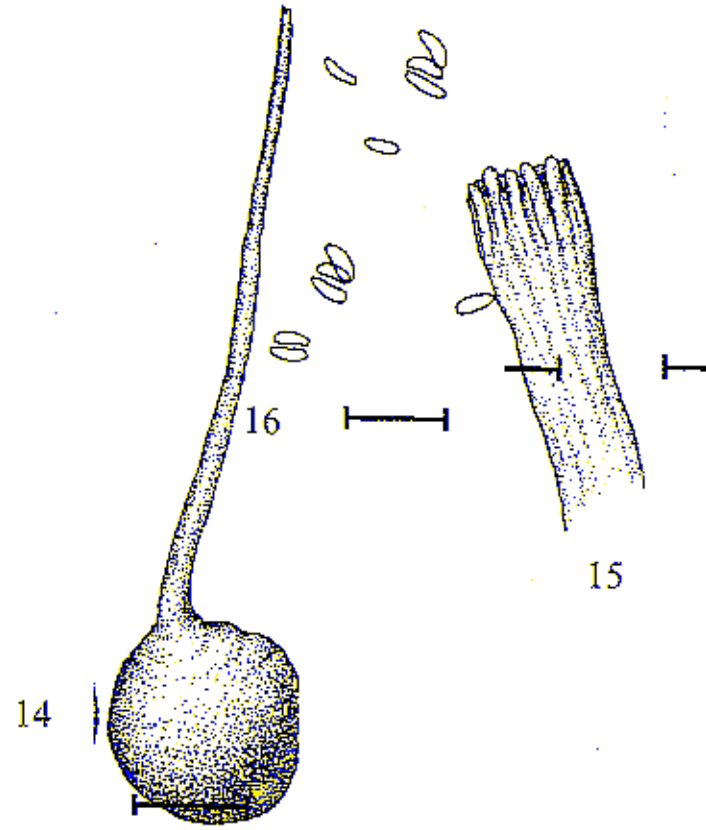
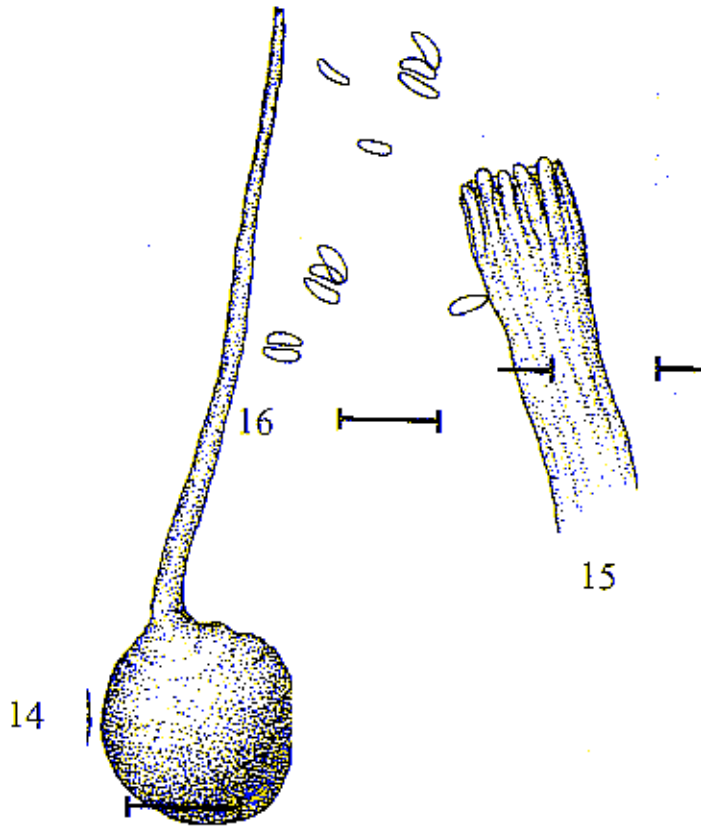
Figs 1-4. *Protosiphon burchellii* on *Philotheca* in the field. Fig. 1, approximately two-thirds of inflorescence; Fig. 2, magnified view of leaf base; Fig. 3, apex of perithecial; Fig. 4, magnified view of perithecial apex showing asci and spores. Bar = 50 µm.

*Protosiphon burchellii* (Figs 1-4) is a new species of the genus *Protosiphon* (Ascomycota, Ascomycetes). It was discovered on *Philotheca* in the field in the Western Cape, South Africa, in 1986. The fungus is a leaf miner, forming a characteristic mine in the leaf. The mine is a narrow, elongated, cylindrical structure, approximately 2-3 mm long and 0.5 mm wide. The mine is formed by the larva of the fungus, which is a small, white, grub-like creature. The mine is filled with frass, which is the excrement of the larva. The mine is attached to the leaf by a short, cylindrical stalk. The fungus is a saprotroph, feeding on the dead tissue of the leaf. The fungus is a member of the genus *Protosiphon*, which is characterized by its characteristic mine structure. The fungus is a member of the family *Protosiphonaceae*, which is a family of fungi that are known for their characteristic mine structure. The fungus is a member of the order *Protosiphonales*, which is an order of fungi that are known for their characteristic mine structure. The fungus is a member of the class *Protosiphonales*, which is a class of fungi that are known for their characteristic mine structure. The fungus is a member of the phylum *Protosiphonales*, which is a phylum of fungi that are known for their characteristic mine structure. The fungus is a member of the kingdom *Protosiphonales*, which is a kingdom of fungi that are known for their characteristic mine structure.

*Protosiphon burchellii* (Figs 1-4) is a new species of the genus *Protosiphon* (Ascomycota, Ascomycetes). It was discovered on *Philotheca* in the field in the Western Cape, South Africa, in 1986. The fungus is a leaf miner, forming a characteristic mine in the leaf. The mine is a narrow, elongated, cylindrical structure, approximately 2-3 mm long and 0.5 mm wide. The mine is formed by the larva of the fungus, which is a small, white, grub-like creature. The mine is filled with frass, which is the excrement of the larva. The mine is attached to the leaf by a short, cylindrical stalk. The fungus is a saprotroph, feeding on the dead tissue of the leaf. The fungus is a member of the genus *Protosiphon*, which is characterized by its characteristic mine structure. The fungus is a member of the family *Protosiphonaceae*, which is a family of fungi that are known for their characteristic mine structure. The fungus is a member of the order *Protosiphonales*, which is an order of fungi that are known for their characteristic mine structure. The fungus is a member of the class *Protosiphonales*, which is a class of fungi that are known for their characteristic mine structure. The fungus is a member of the phylum *Protosiphonales*, which is a phylum of fungi that are known for their characteristic mine structure. The fungus is a member of the kingdom *Protosiphonales*, which is a kingdom of fungi that are known for their characteristic mine structure.









Smith, M. J., Patik, C. (1972) & Rooinphind, D. (1985). *Wingfieldia* with a *Metulidella* base production in the genus *Opi*. *Mycot. Transactions of the Botanical Society of South Africa* 9, 159-166.

Taubenhaus, J. (1913) *Die Pilzkrankheiten der Kiefer*. Leipzig: C. Neumann, Neudamm, 1988. *Leptogium* 159-166.

Upadhyay, H. P. (1988) *Wingfieldia* and *Opi*. *Conifer Diseases of the World* (ed. by F. W. O. Scholten & F. W. O. Scholten). University of Georgia, Athens, Geomeric Phytopathological Society Press: St Paul, Georgia, U.S.A.

Van Wyk, P. W. J. & Wingfield, D. M. (1994). *Wingfieldia* and *Opi*. *Conifer Diseases of the World* (ed. by F. W. O. Scholten & F. W. O. Scholten). University of Georgia, Athens, Geomeric Phytopathological Society Press: St Paul, Georgia, U.S.A.

Van Wyk, P. W. J., Wingfield, D. M. (1994). *Wingfieldia* and *Opi*. *Conifer Diseases of the World* (ed. by F. W. O. Scholten & F. W. O. Scholten). University of Georgia, Athens, Geomeric Phytopathological Society Press: St Paul, Georgia, U.S.A.

Weijman, A. C. M. & Harkn, G. B. (1993). *Wingfieldia* and *Opi*. *Conifer Diseases of the World* (ed. by F. W. O. Scholten & F. W. O. Scholten). University of Georgia, Athens, Geomeric Phytopathological Society Press: St Paul, Georgia, U.S.A.

(Accepted 3 November 1992)

Smith, M. J., Patik, C. (1972) & Rooinphind, D. (1985). *Wingfieldia* with a *Metulidella* base production in the genus *Opi*. *Mycot. Transactions of the Botanical Society of South Africa* 9, 159-166.

Taubenhaus, J. (1913) *Die Pilzkrankheiten der Kiefer*. Leipzig: C. Neumann, Neudamm, 1988. *Leptogium* 159-166.

Upadhyay, H. P. (1988) *Wingfieldia* and *Opi*. *Conifer Diseases of the World* (ed. by F. W. O. Scholten & F. W. O. Scholten). University of Georgia, Athens, Geomeric Phytopathological Society Press: St Paul, Georgia, U.S.A.

Van Wyk, P. W. J. & Wingfield, D. M. (1994). *Wingfieldia* and *Opi*. *Conifer Diseases of the World* (ed. by F. W. O. Scholten & F. W. O. Scholten). University of Georgia, Athens, Geomeric Phytopathological Society Press: St Paul, Georgia, U.S.A.

Van Wyk, P. W. J., Wingfield, D. M. (1994). *Wingfieldia* and *Opi*. *Conifer Diseases of the World* (ed. by F. W. O. Scholten & F. W. O. Scholten). University of Georgia, Athens, Geomeric Phytopathological Society Press: St Paul, Georgia, U.S.A.

Weijman, A. C. M. & Harkn, G. B. (1993). *Wingfieldia* and *Opi*. *Conifer Diseases of the World* (ed. by F. W. O. Scholten & F. W. O. Scholten). University of Georgia, Athens, Geomeric Phytopathological Society Press: St Paul, Georgia, U.S.A.

(Accepted 3 November 1992)